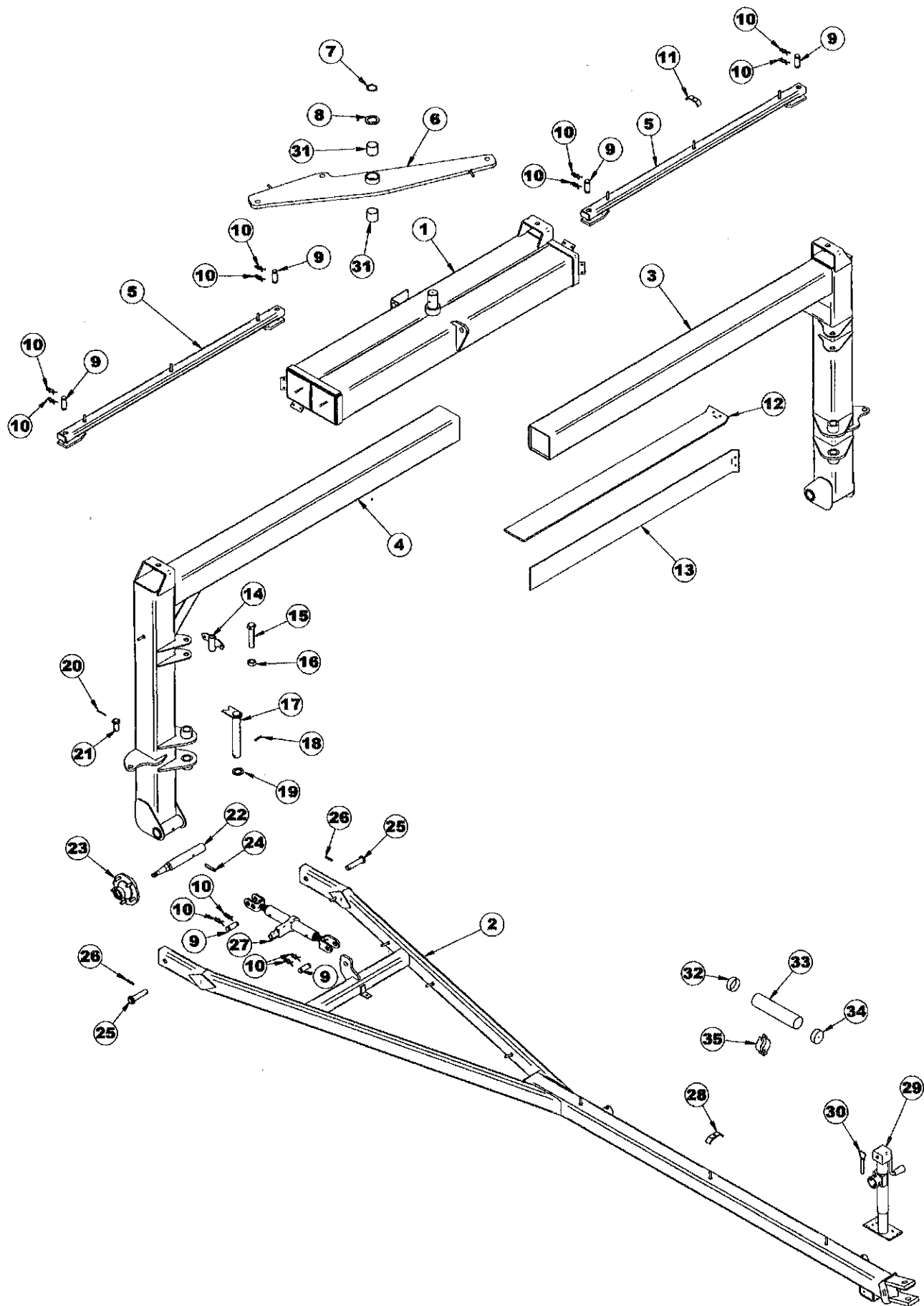


FIGURE 1



**FIGURE 1
X SERIES RAKE
MAIN FRAME**

ITEM	PART NO.	DESCRIPTION
1.	XR1	Main Frame
2.	XR2	Pole
3.	XR3	Left Axle Upright
4.	XR4	Right Axle Upright
5.	XR5	Width Link
6.	XR6	Width Cam
7.	DWM280	Snap Ring 2"
8.	XR7	Cam Pivot Washer
9.	T143	Jack Pin
10.	T144	Hair Pin
11.	23N67	Two Hose Clamp
12.	XR8	Thick Poly Slide
13.	XR9	Thin Poly Slide
14.	XR10	Stabilizer Pivot
15.	XR11	1" x 5" Bolt GR. 5
16.	BFR178	1" Top Lock Nut
17.	XR12	Beam Pivot Pin
18.	F26	5/16" x 2-1/4" Expansion Pin
19.	XR13	Beam Pivot Pin Washer
20.	HSB52	1/4" x 1-3/4" Cotter Pin
21.	XR14	Transport Lock Pivot
22.	XR15	Removable Spindle
23.	BFR60	Hub
*	BFR57	Seal
*	BFR58	Inner Bearing
*	BFR59	Inner Race
*	BFR61	Outer Race
*	BFR62	Outer Bearing
*	BFR63	Washer
*	BFR64	Nut
*	BFR65	Cotter Pin
*	BFR66	Hub Cap
*	BFR143	Stud Bolt
*	BFR144	Nut
*	BFR67	5 x 15 Wheel
*	BFR128	6.70 x 15 Tire
24.	12V59	3/8" x 2-3/4" Roll Pin
25.	XR16	Pole Hinge Pin
26.	3G22	5/16" x 1-3/4" Roll Pin
27.	T138	Ratchet Jack
28.	HE42	Four Hose Clamp
29.	BFR223	Jack
30.	BFR4	Jack Pin & Chain
31.	XR17	Cam Pivot Bushing
32.	S414	Cap
33.	S415	Manual Holder Tube
34.	S418	Cap w/Hole
35.	S416	Manual Hanger Clamp

NOTE: * (MEANS NOT SHOWN)

FIGURE 2

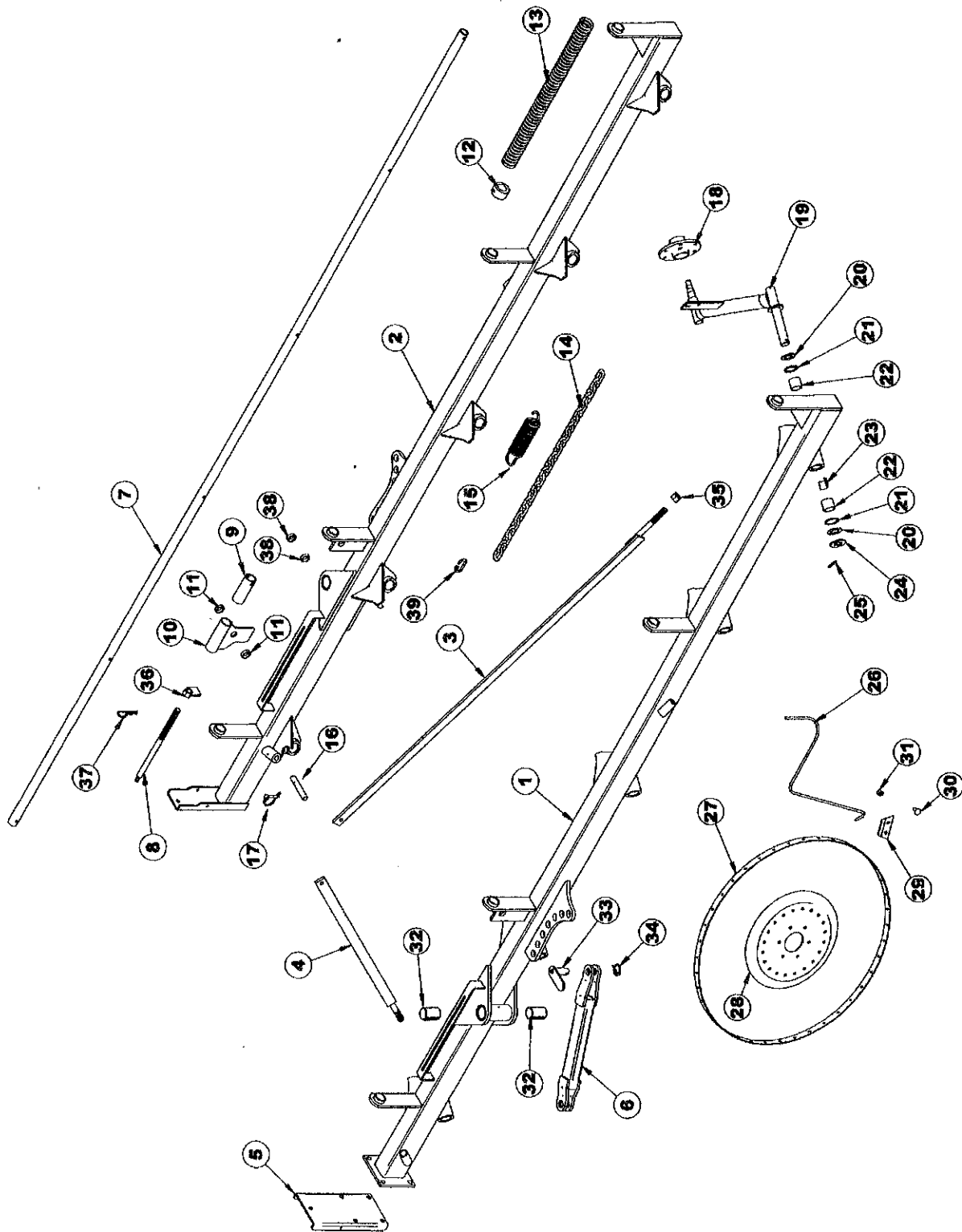
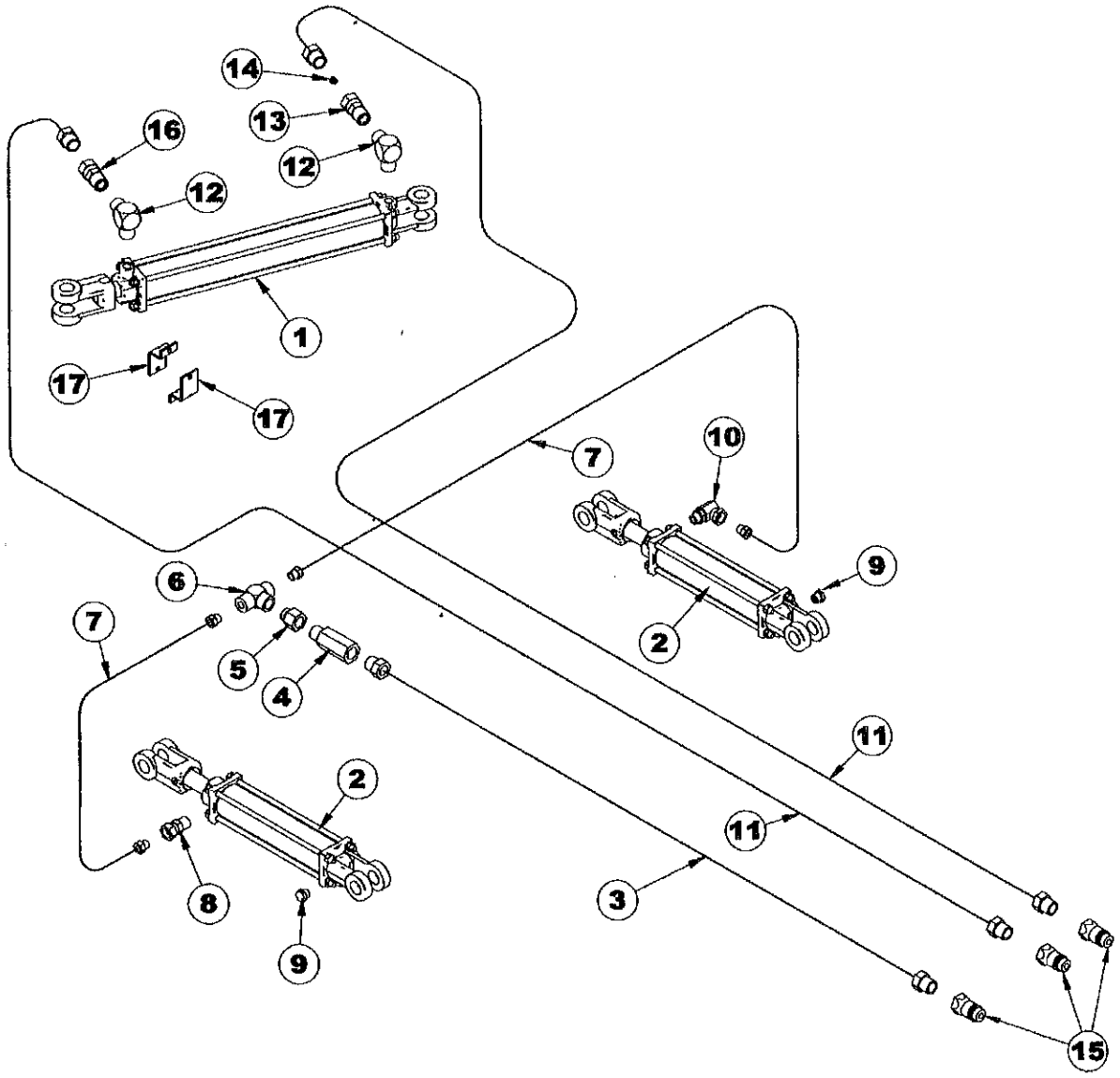


FIGURE 2
X SERIES RAKE
RAKE BEAMS

ITEM	PART NO.	DESCRIPTION
1.	XR18	Right Rake Beam
2.	XR19	Left Rake Beam
3.	XR20	Tension Stabilizer
4.	XR21	Short Tension Stabilizer
5.	XR22	Lift Pipe Stop
6.	XR23	Transport Arm
7.	XR24	Main Lift Pipe
8.	HD154	Acme Rod
9.	XR25	Long Lift Pipe Collar
10.	XR26	Lift Cylinder Slide
11.	K132	Pipe Spacer
12.	BFR82	Pipe Clamp
13.	XR27	Heavy Lowering Spring
14.	XR28	Rake Arm Chain
15.	BFR138	Rake Arm Spring
16.	XR29	Stop Pin
17.	DWM324	Safety Snap Pin
18.	BFR32	Rake Wheel Hub
*	T163	Seal
*	T164	Inner Bearing
*	T165	Inner Race
*	T171	Outer Race
*	T170	Outer Bearing
*	T172	Nut
*	T169	Cotter Pin
*	T173	Hub Cap
*	T168	10mm x 25mm Bolt
*	T166	10mm Nut
19.	BFR437	Rake Arm RH
*	BFR436	Rake Arm LH
20.	BFR221	Poly Washer
21.	S99	O-Ring
22.	G16	Bushing
23.	XR30	Wide Bearing Spacer
24.	BFR229	Rake Arm Washer
25.	3G22	5/16" x 1-3/4" Roll Pin
26.	T176	Rake Wheel Tooth
27.	T177	Outer Ring
28.	T179	Rake Wheel Center
29.	T178	Rake Tooth Clip
30.	T175	10mm x 25mm Carriage Bolt
31.	BFR625	10mm Lock Nut
*	T174	Rake Wheel LH
*	BFR31	Rake Wheel RH
32.	WM282	Split Bushing #175-150-125
33.	XR31	Transport Lock Pin
34.	F56	Lynch Pin
35.	T133	3/4" NF Lock Nut
36.	BFR426	Rake Pressure Handle
37.	BFR137	Hair Pin
38.	X94	5/16" Pipe Spacer
39.	XR65	1/4" Quick Link

NOTE: * (MEANS NOT SHOWN)

FIGURE 3



**FIGURE 3
X SERIES RAKE
HYDRAULICS**

ITEM	PART NO.	DESCRIPTION
1.	XR32	Hydraulic Cylinder 3-1/2" x 16"
2.	16SV171A	Hydraulic Cylinder 2" x 10"
3.	XR33	Hydraulic Hose 1/4" x 240" 1/2"MP & 1/2"MP
4.	BFR554	Flow Valve
5.	BFR555	Adapter
6.	BFR74	3/8" Female Tee
7.	XR34	Hydraulic Hose 1/4" x 180" 3/8"MP & 3/8"MP
8.	BFR122	3/8" Male Union Adapter
9.	BFR70	3/8" Vent Plug
10.	DWM110	3/8" Street Elbow w/90° Swivel
11.	XR35	Hydraulic Hose 1/4" x 270" 1/2"MP & 1/2"MP
12.	HE58	1/2" Street Elbow
13.	LW174	1/2" Male Union Adapter (Threaded)
14.	XR36	.062 Orifice .250 Pipe Plug
15.	DWM205	Male Quick Coupler
16.	WM174	1/2" Male Union Adapter (Unthreaded)
17.	XR47	1" Cylinder Spacer

FIGURE 4

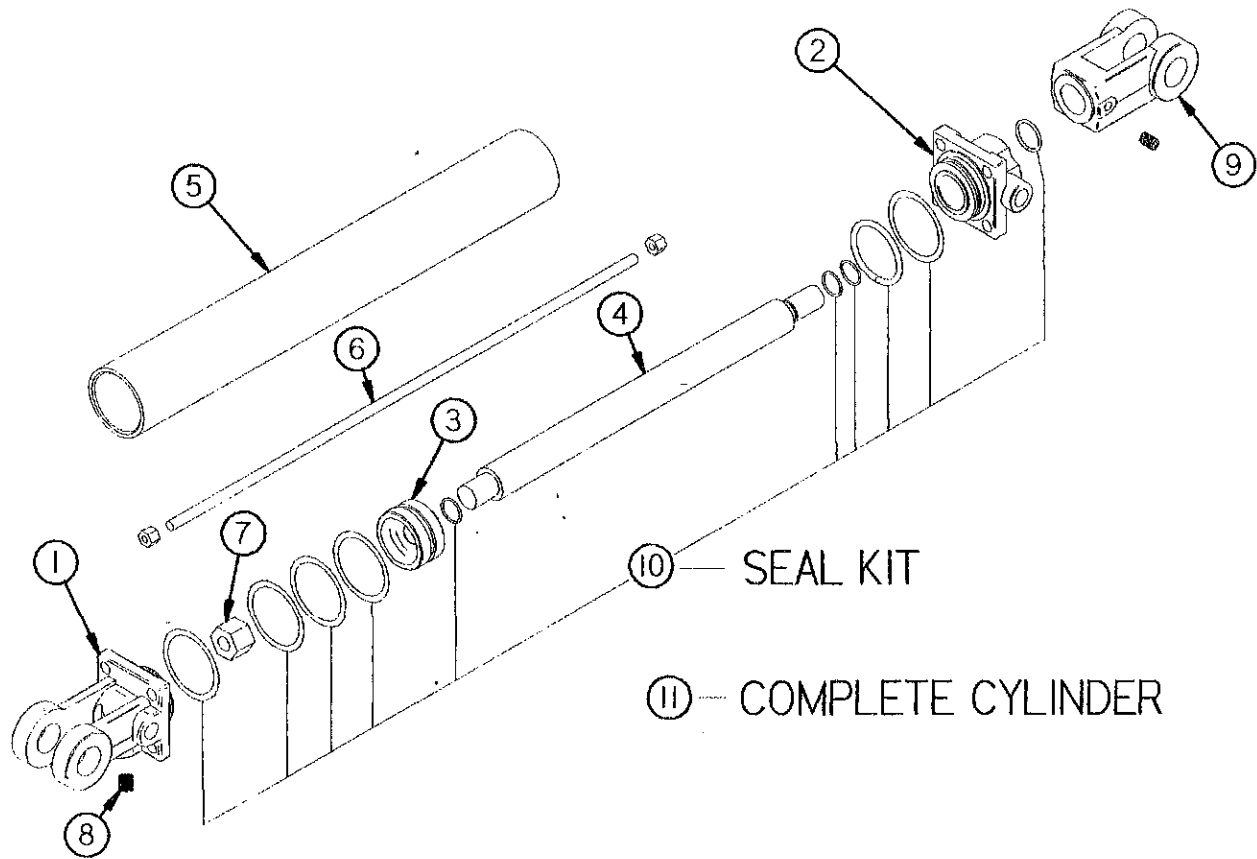


FIGURE 4
X SERIES RAKE FRAME WIDTH ADJUSTMENT
HYDRAULIC CYLINDER 3-1/2" X 16"

ITEM	PART NO.	DESCRIPTION
1.	XR55	Clevis Cap
2.	XR56	Rod Cap
3.	XR57	Piston
4.	XR58	Rod
5.	XR59	Cylinder Tube
6.	XR60	Tie Rod
7.	XR61	Piston Nut
8.	XR62	Plug
9.	XR63	Rod Clevis
10.	XR64	Seal Kit
11.	XR32	Complete Cylinder

FIGURE 5

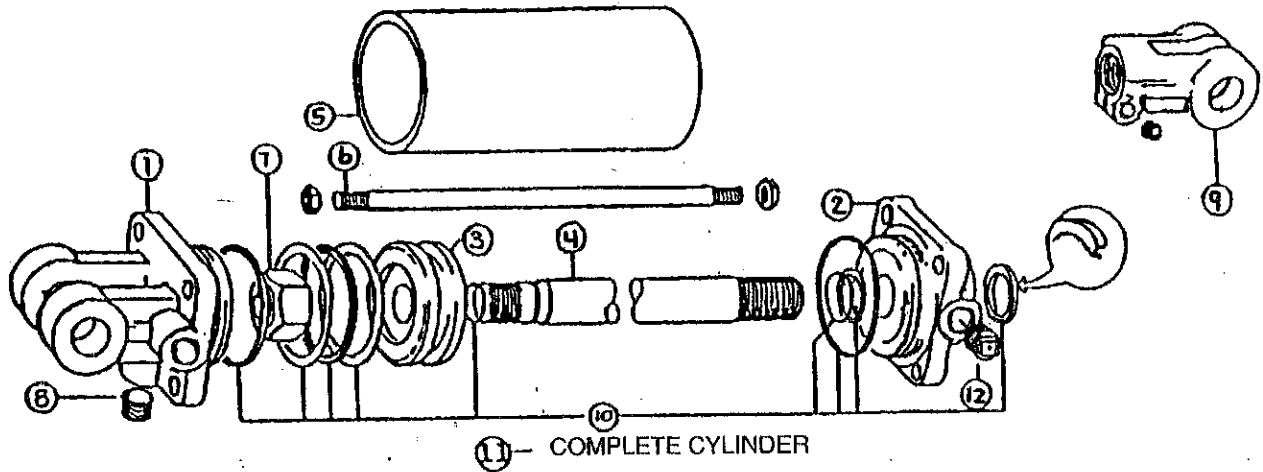


FIGURE 5
X SERIES RAKE (RAKING) WHEEL LIFT
HYDRAULIC CYLINDER 2" X 10"

ITEM	PART NO.	DESCRIPTION
1.	23N142A	Clevis Cap
2.	23N143A	Rod Cap
3.	23N144	Piston
4.	16SV168A	Rod
5.	16SV169	Cylinder Tube
6.	16SV170	Tie Rod
7.	23N148	Piston Nut
8.	23N149	Plug
9.	23N150A	Rod Clevis
10.	23N151	Seal Kit
11.	16SV171A	Complete Cylinder
12.	BFR70	Vent Plug

FIGURE 6

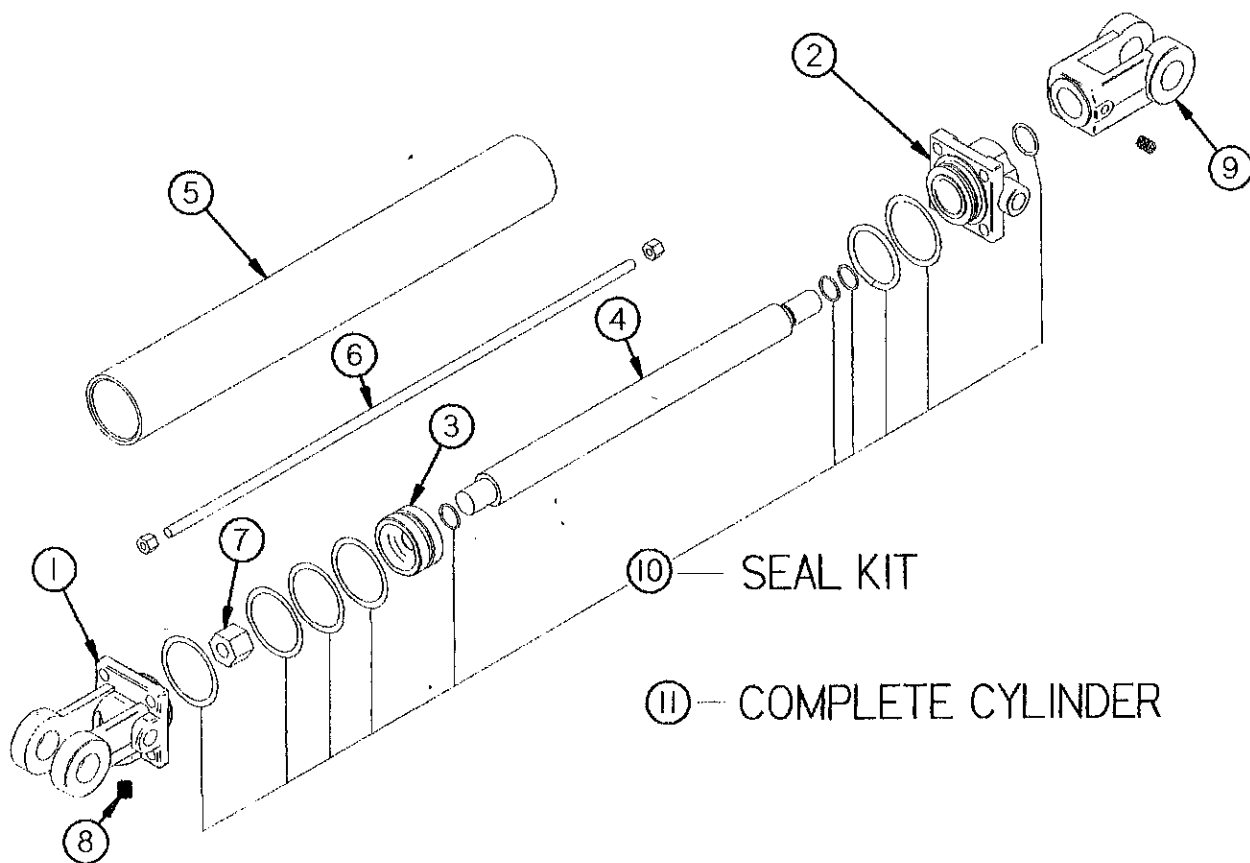


FIGURE 6
X SERIES RAKE OPTIONAL BEAM ANGLE
HYDRAULIC CYLINDER 2" X 8"

ITEM	PART NO.	DESCRIPTION
1.	23N142A	Clevis Cap
2.	23N143A	Rod Cap
3.	23N144	Piston
4.	T134A	Rod
5.	BFR68	Cylinder Tube
6.	T186	Tie Rod
7.	23N148	Piston Nut
8.	23N149	Plug
9.	23N150A	Rod Clevis
10.	23N151	Seal Kit
11.	BFR69A	Complete Cylinder

FIGURE 7

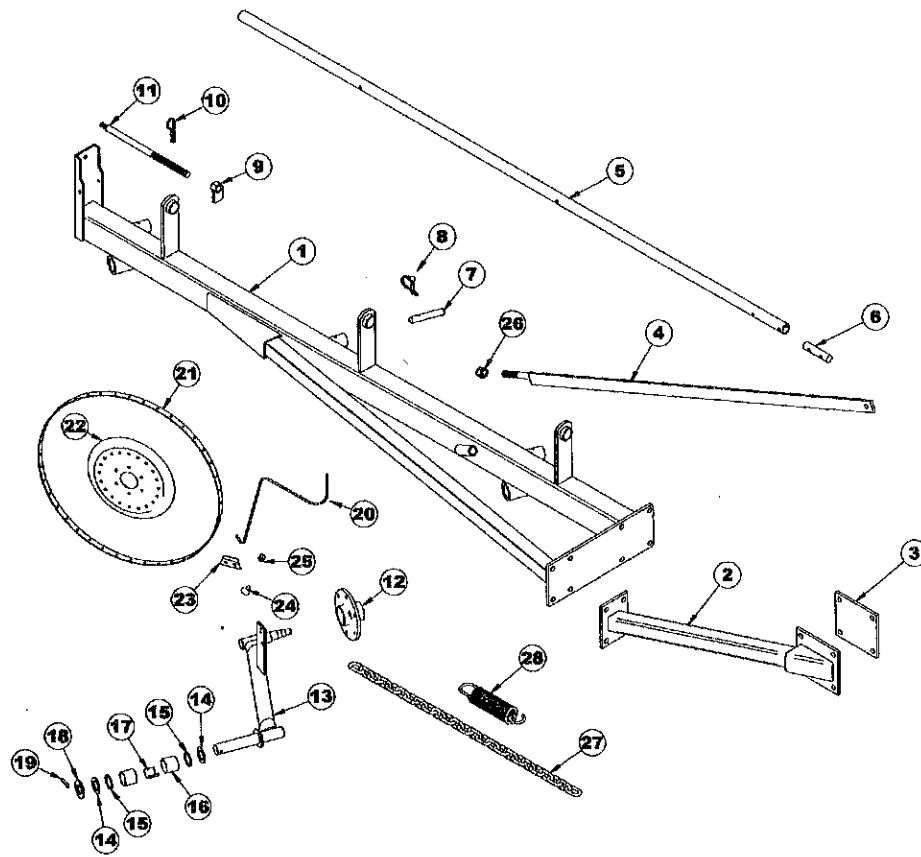


FIGURE 7
X SERIES RAKE
OPTIONAL EXTENSION

ITEM	PART NO.	DESCRIPTION	ITEM	PART NO.	DESCRIPTION
1.	XR37	X-Rake Extension	*	T173	Hub Cap
2.	XR38	Forward Brace	*	T168	10mm x 25mm Bolt
3.	XR39	Forward Brace Front Bracket	*	T166	10mm Nut
4.	XR20	Tension Stabilizer	13.	BFR437	Rake Arm RH
5.	XR40	Extension Lift Pipe	14.	BFR221	Poly Washer
6.	XR41	Extension Lift Pipe Connector	15.	S99	O-Ring
7.	XR29	Stop Pin	16.	G16	Bushing
8.	DWM324	Safety Snap Pin	17.	XR30	Wide Bearing Spacer
9.	BFR426	Rake Pressure Handle	18.	BFR229	Rake Arm Washer
10.	BFR137	Hair Pin	19.	3G22	5/16" x 1-3/4" Roll Pin
11.	HD154	Acme Rod	20.	T176	Rake Wheel Tooth
12.	BFR32	Rake Wheel Hub	21.	T177	Outer Ring
*	T163	Seal	22.	T179	Rake Wheel Center
*	T164	Inner Bearing	23.	T178	Rake Tooth Clip
*	T165	Inner Race	24.	T175	10mm x 25mm Carriage Bolt
*	T171	Outer Race	25.	BFR625	10mm Lock Nut
*	T170	Outer Bearing	26.	T133	3/4" NF Lock Nut
*	T172	Nut	27.	XR28	Rake Arm Chain
*	T169	Cotter Pin	28.	BFR138	Rake Arm Spring

NOTE: * (MEANS NOT SHOWN)

FIGURE 8

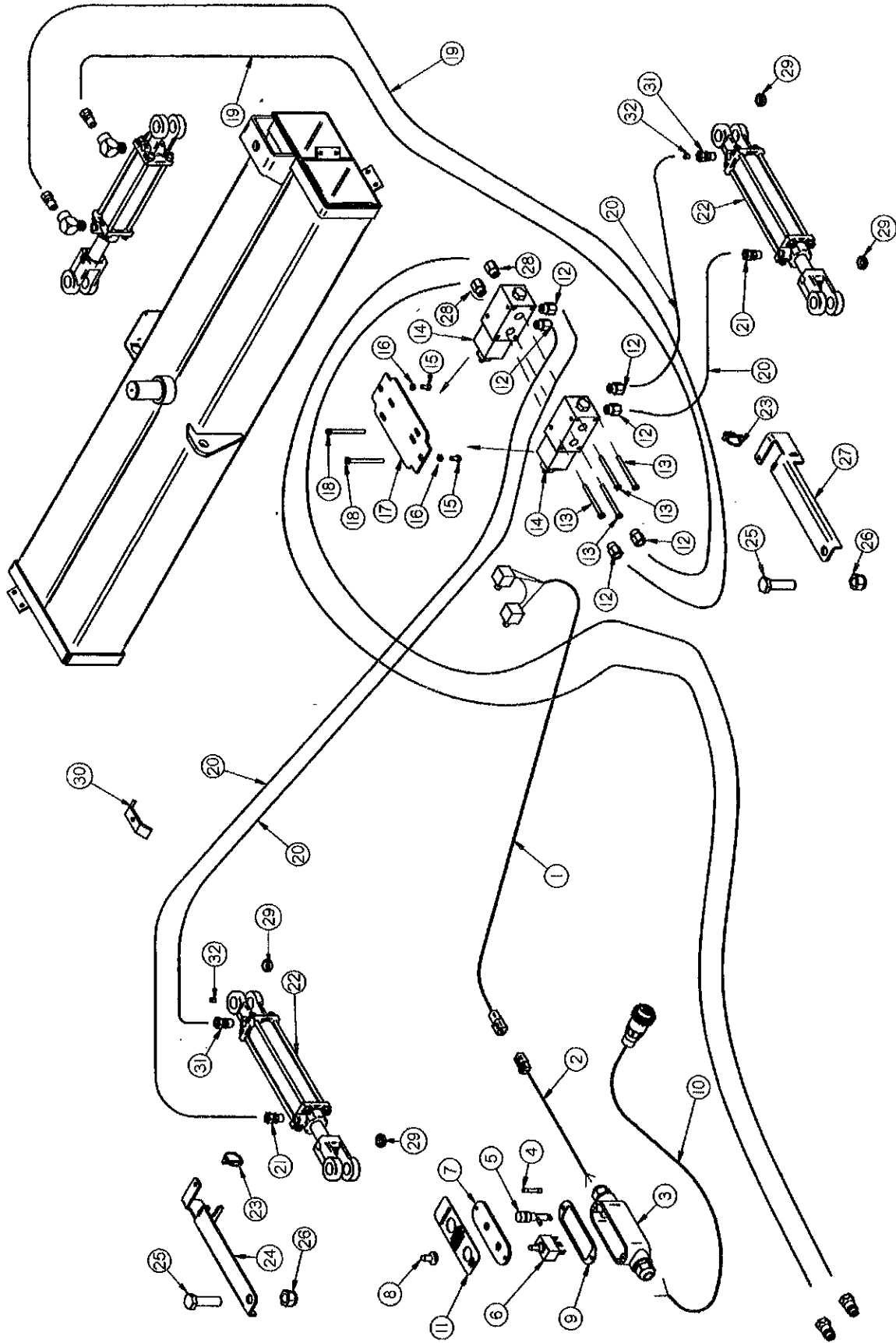


FIGURE 8
X SERIES RAKE
OPTIONAL HYDRAULIC BEAM ANGLE

ITEM	PART NO.	DESCRIPTION
1.	XR66	Pole Cord (18')
2.	WM284	Tractor Supply Cord (5'6")
3.	16SV316	Control Box
4.	16SV232	Fuse
5.	16SV231	Fuse Holder
6.	HD207	Switch SPDT
7.	16SV318	Control Box Cover
8.	16SV235	Switch Boot
9.	16SV317	Control Box Gasket
10.	16SV271	Control Box Power Supply w/Plug in Slots
11.	11806	Decal
12.	DWM269	3/4" O-Ring to 3/8" Pipe Swivel Adapter
13.	23N1	5/16" x 5" Bolt GR. 5
*	RGB39	5/16" Lock Washer
*	12V65	5/16" Nut
14.	FR81	Solenoid Valve
*	FR84	O-Ring Seal Kit
15.	80N57	3/8" x 3/4" Bolt GR. 5
16.	B68	3/8" Lock Washer
17.	XR44	Mounting Plate
18.	XR45	1/4" x 3" Socket Head Cap Screw
*	K84	1/4" Lock Washer
*	LW140	1/4" Nut
19.	DWM108	1/4" x 56" Hydraulic Hose 3/8"MP & 1/2"MP
20.	XR47	1/4" x 180" Hydraulic Hose 3/8"MP & 3/8"MP
21.	DWM233	3/8" Union Adapter
22.	BFR69A	2" x 8" Cylinder
23.	BFR443	Clip Pin
24.	XR49	Right Transport Lock
25.	BFR177	1" x 4" Bolt GR. 5
26.	BFR178	1" Lock Nut
27.	XR48	Left Transport Lock
28.	XR54	Female Union Adapter 3/4" O-Ring to 1/2" Pipe
29.	K132	Pipe Spacer
30.	HE42	Two Hose Clamp
31.	T244	3/8" Union Adapter w/.042 Orifice
32.	DWM250	.042 Orifice

NOTE: * (MEANS NOT SHOWN)

FIGURE 9

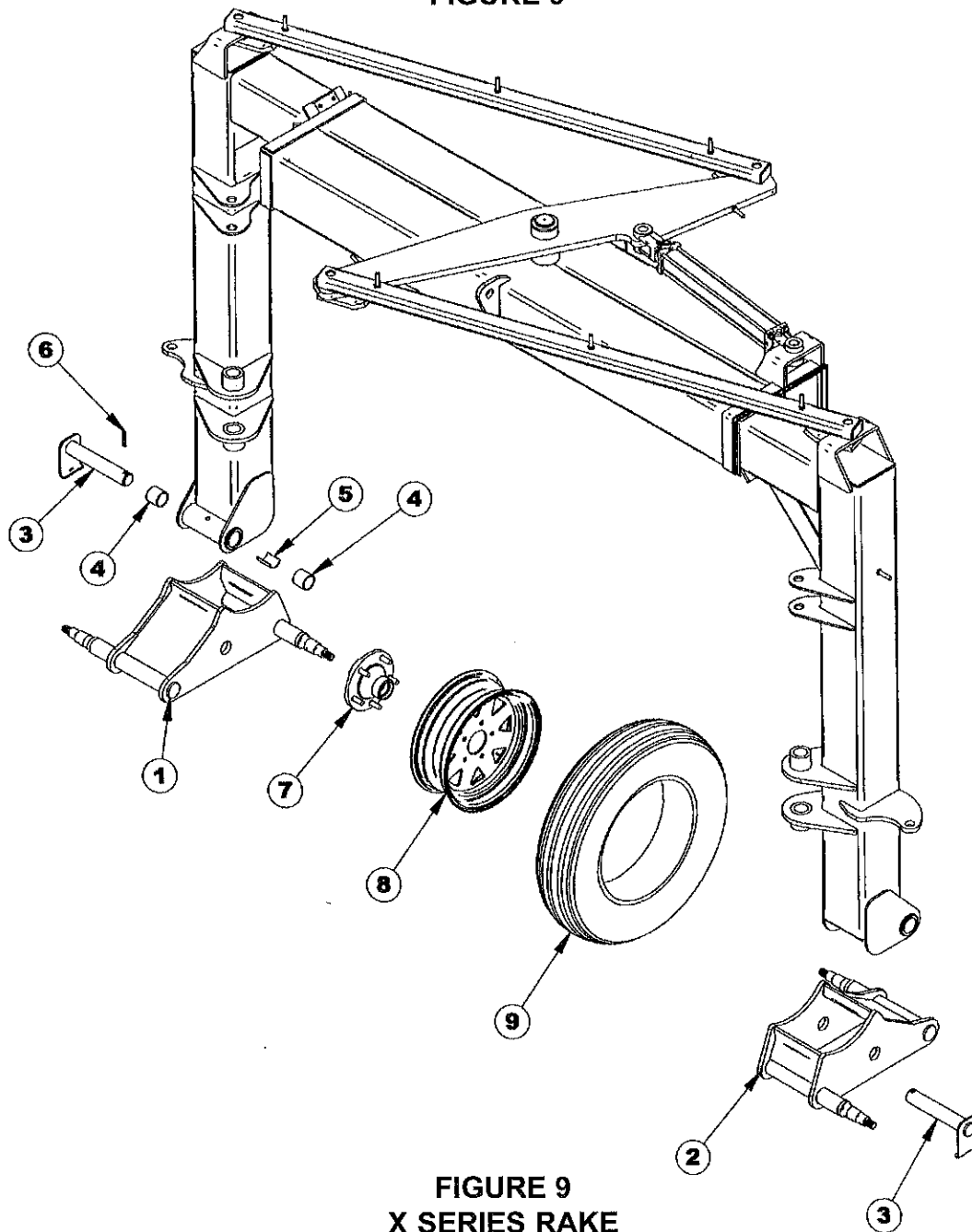


FIGURE 9
X SERIES RAKE
OPTIONAL TANDEM AXLE

ITEM	PART NO.	DESCRIPTION	ITEM	PART NO.	DESCRIPTION
1.	XR50	Right X-Rake Tandem	*	CAT9	Outer Race
2.	XR51	Left X-Rake Tandem	*	CAT10	Outer Bearing
3.	XR52	Tandem Pivot Pin	*	BFR63	Washer
4.	BFR625	Bushing	*	T35	Nut
5.	XR53	Tandem Bushing Spacer	*	T37	Cotter Pin
6.	12V59	3/8" x 2-3/4" Roll Pin	*	CAT13	Hub Cap
7.	CAT8	Ground Wheel Hub	*	CAT128A	Hub Stud
*	CAT5	Seal	*	CAT14	Hub Nut
*	CAT6	Inner Bearing	8.	CAT195	13 x 4.5 Wheel
*	CAT7	Inner Race	9.	CAT198	ST175/80D13 Tire

NOTE: * (MEANS NOT SHOWN)

FIGURE 10

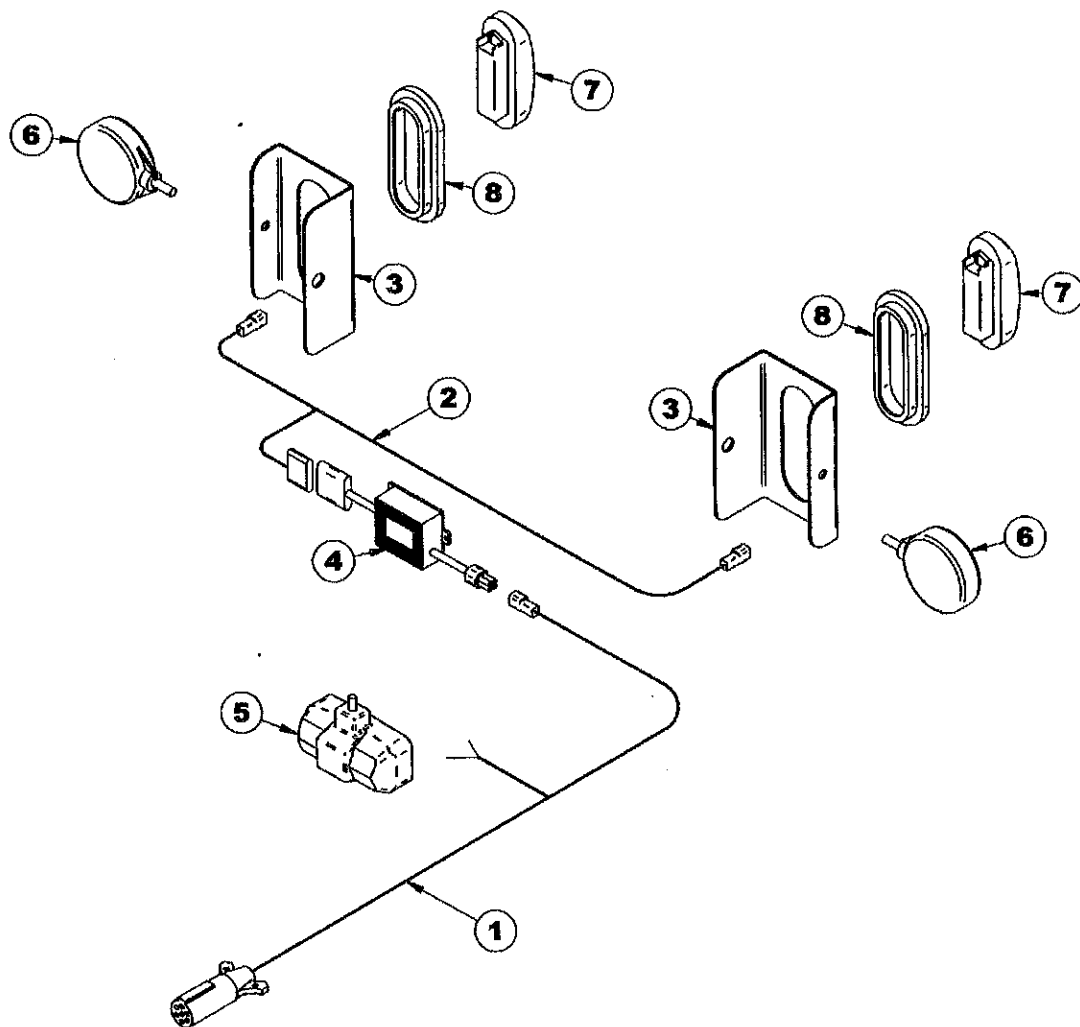


FIGURE 10
X SERIES RAKE
OPTIONAL TRANSPORT/WORK LIGHTING

ITEM	PART NO.	DESCRIPTION
1.	MHD1	Light Harness Pole Cord
2.	MHD2	Light Harness Frame Cord
3.	HD148	Light Bracket
4.	S441	Light Module
5.	DWM130	Work Light
6.	DWM129	Yellow Hazard Light
7.	S310	Red Tail Light
8.	S308	Rubber Light Mount